

Technical data sheet for

E33T5 ON THE SK33 STAND

1/1 GN Electric Convection Oven

TOUCH SCREEN CONTROL on a Stainless Steel Stand



E33T5 OVEN



E33T5

Unit shall be a Electric Seal electrically heated Turbofan convection oven. The oven shall have a one piece vitreous enamel oven chamber, stainless exterior top and sides. The oven shall have a vented safe touch side hinged door with slam shut latching and pendulum operation door handle. Oven shall have capacity for 5 half size sheet pans or 5 1/1 GN pans. The oven shall have selectable moisture level injection and a 2 speed oven fan. The oven shall be controlled by a 5.7" Touch Screen control with manual and recipe operating modes with icon driven recipe programs and individual shelf control operation mode and multiple stage cooking. Oven controller shall have USB port for recipe file uploading and downloading. A core temperature probe M236060 is optional. The oven shall include dual halogen oven lamps. The oven shall be able to be bench mounted on 76mm feet or mounted on oven stand model SK33. Unit shall be supplied in 100% recyclable shipping packaging. This unit shall be Energy Star certified.

SK33

Unit shall be a Blue Seal Turbofan stainless steel oven stand. The stand shall be constructed from stainless steel tube with castors, with front castors having dual swivel and wheel locks. It shall be fitted with 5 tray runners suitable for up to 5 1/1 GN pans. The stand shall be fully compatible with, and support, Turbofan Convection Oven models E33D5 and E33T5. Unit shall be supplied in 100% recyclable shipping packaging.

STANDARD FEATURES

- 5 1/1 GN Gastronorm tray capacity
- 85mm tray spacing
- Compact 610mm width
- Touch Screen control
- Program and Manual modes
- Icon driven program menu
- Multiple stage cooking
- Individual shelf control and shelf timers
- Auto-Start mode
- Energy Save Set-Back mode
- Straight or Flex cooking time
- Core probe cooking (optional Core probe Kit)
- USB port for program/icon updating
- Moisture Injection mode (5 levels)
- 2 speed bi-directional reversing fan system
- 5.8kW heating power
- Safe-Touch vented side hinged door
- Slam shut door latch
- Pendulum operation door handle
- Vitreous enamel oven chamber
- Push fit continuous oven door seal (no tools)
- Dual halogen oven lamps
- Anti-skid 50mm dia. 76mm high adjustable stainless steel feet
- 100% recyclable packaging

ACCESSORIES

- Optional M236060 Core Temperature Probe Kit
- Turbofan SK33 Oven Stand
- DSK33 Double Stacking Kit

E33T5 1/1 GN Convection Oven TOUCH SCREEN CONTROL

CONSTRUCTION

Vitreous enamel fully welded oven chamber
Stainless steel front, sides and top exterior
Stainless steel oven fan baffle and oven vent
Removable 5 position stainless steel side racks
Stainless steel frame side hinged door
5mm thick door outer glass
5mm thick low energy loss door inner glass
Stainless steel control panel
Aluminised coated steel base and rear panels

CONTROLS

5.7" LED backlit touch screen
Icon driven program menu
BMP image icon imports via USB port
Program updates via USB port
Temperature range 30 - 260°C
Adjustable sounder tones and volume
Other specification on request
Safety thermostat cut-out
Optional core temp probe

CLEANING

Stainless steel top and side exterior panels
Vitreous enamel oven chamber
Fully removable stainless steel oven side racks
Removable stainless steel oven fan baffle
Easy clean door system with hinge out door inner glass (no tools required)
Removable push fit oven door seal (no tools required)
76mm high stainless steel feet for easy access underside

SPECIFICATIONS

Electrical Requirements
230-240V, 50Hz, 1P+N+E, 6.0kW, 25A

Water Requirements (optional)
Cold water connection ¾" BSP male

External Dimensions

Width 610mm
Height 730mm including 76mm feet
Depth 680mm

Oven Internal Dimensions

Width 330mm
Height 515mm
Depth 570mm
Volume 0.10m³

Oven Rack Dimensions

Width 330mm
Depth 530mm

Nett Weight
71.5kg

Packing Data

93kg
Width 655mm
Height 805mm
Depth 830mm
Volume 0.44m³

SK33 Stainless Steel Stand

All stainless steel welded frame oven stand for Turbofan E33D and E33T Series ovens
5 position tray runners standard
76mm diameter wheel swivel castors standard with 2 front castors with dual swivel and wheel
Welded 38mm and 32mm square tube front and rear frames
Welded rack supports/side frames
4 dia. 76mm swivel castors with 2 front castors dual wheel and swivel lock
Supplied CKD for assembly on site

External Dimensions (SK33 Oven Stand)

Width 610mm
Height 880mm
Depth 650mm

Nett Weight (SK33 Oven Stand)
18kg

Packing Data (SK33 Oven Stand)

20.5kg
Width 755mm
Height 795mm
Depth 160mm
Volume 0.1m³

INSTALLATION CLEARANCES

Rear 50mm
LH Side 50mm
RH Side* 75mm
* For fixed installations a minimum of 500mm is required for service

CLEARANCE FROM SOURCES OF HEAT

A minimum distance of 300mm from the appliance sides is required



blue-seal.co.uk
turbofanoven.com

United Kingdom
Blue Seal Limited

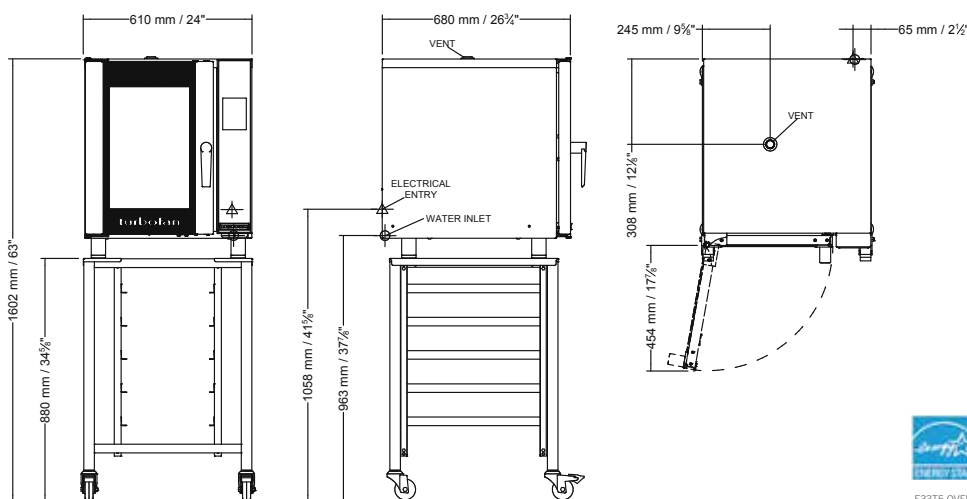
Unit 67
Gravelly Business Park
Gravelly
Birmingham B24 8TQ
England
Telephone 0121-327 5575
Facsimile 0121-327 9711
sales@blue-seal.co.uk
www.blue-seal.co.uk

Australia
Moffat Pty Limited

740 Springvale Road
Mulgrave, Victoria 3170
Australia
Telephone 03-9518 3888
Facsimile 03-9518 3833
vsales@moffat.com.au
www.moffat.com.au

New Zealand
Moffat Limited

Christchurch
45 Illinois Drive
Izone Business Hub
Rolleston 7675
Telephone +64 3-983 6600
Facsimile +64 3-983 6660
sales@moffat.co.nz
www.moffat.co.nz



E33T5 OVEN



ISO9001
Quality
Management
Standard

Designed and manufactured by



ISO9001

All Turbofan products are designed and manufactured by Moffat using the internationally recognised ISO9001 quality management system, covering design, manufacture and final inspection, ensuring consistent high quality at all times.

In line with policy to continually develop and improve its products, Moffat Limited reserves the right to change specifications and design without notice.



© Copyright Moffat Ltd
UK.TFN.S.1601

